

BUILDING



**BRINGING AFFORDABLE HOMES TO SF'S WATERFRONT**

Last month, BRIDGE and co-developer The John Stewart Company broke ground on two buildings in San Francisco that will provide 178 new permanently affordable homes for families, seniors and formerly homeless seniors. "88 Broadway and 735 Davis are a model for taking underutilized land and turning it into what we need most in this city-100% affordable housing," said Mayor London Breed.

[Read more](#)  
[View album](#)



**\$19.7 MILLION FOR INNOVATION + SUPPORTIVE HOUSING**

A Citizens Oversight Committee has recommended that BRIDGE be awarded \$19.7 million under the City of Los Angeles' bond-funded HHH Housing Challenge. Pending formal approval of the competitive grant, BRIDGE plans to use the funds to catalyze 140 permanent supportive housing apartments for homeless families and youth aging out of foster care. Pictured above is Vermont and Manchester in LA, where BRIDGE and partners are planning 180 apartments, including affordable and supportive housing.

[Read more in the Los Angeles Times](#)



**NEW APARTMENTS IN SOUTHWEST PORTLAND**

The Vera in Portland (right) is currently accepting pre-applications. This beautiful new building will offer affordable rents and high quality services for residents including veterans, families and people with extremely low incomes. Planning is well under way for BRIDGE's second phase (left) of RiverPlace Parcel 3, which is permit- and shovel-ready.

[Read more about The Vera](#)

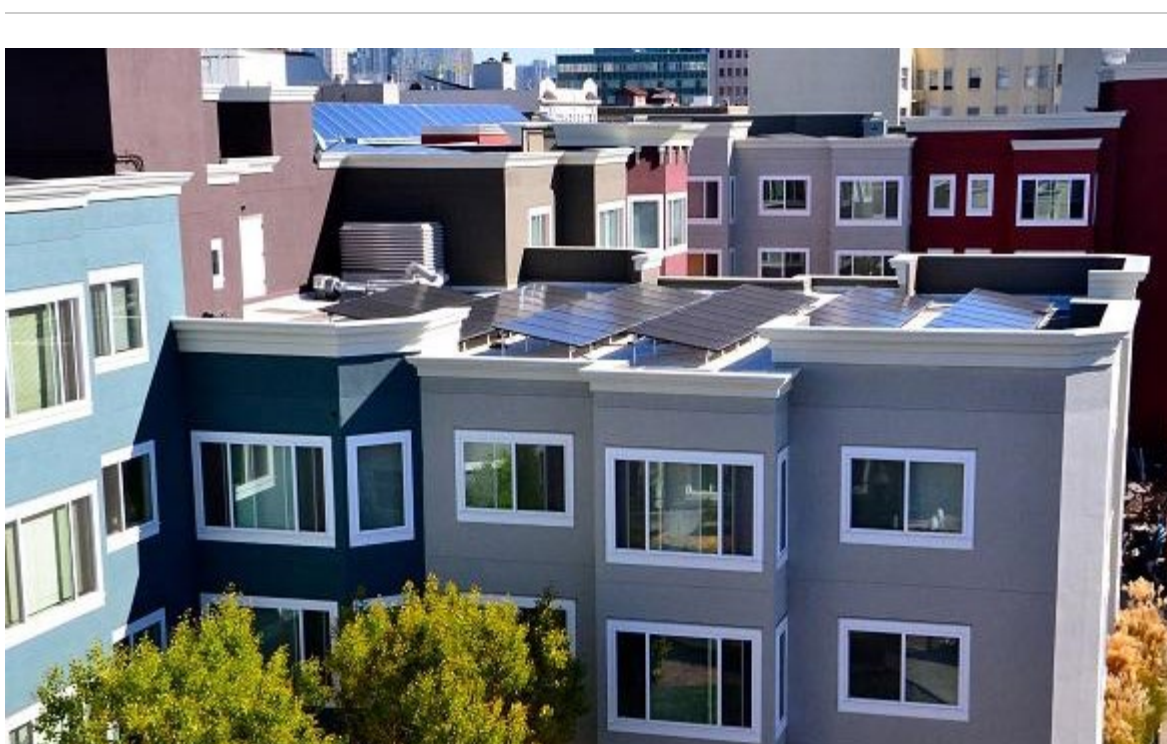
SUSTAINING



**FINDING STABILITY**

Raymond K., above, who holds a bachelor's degree in data processing, used to be employed as a tech supervisor for a large company. He worked to overcome some personal struggles, but then the economic downturn of 2008 cost him his job, his income and his home. Visit BRIDGETown to learn about [Raymond's journey](#) to becoming a BRIDGE resident.

[Read more](#)



**BIG SAVINGS OF WATER AND ENERGY**

Through systematic implementation of sustainability measures throughout our real estate portfolio, BRIDGE has achieved an approximately 47% reduction in energy use (including solar generation) and 19% reduction in water use against a 2010 baseline. This puts BRIDGE on track to exceed the Big Reach, a national initiative by Stewards of Affordable Housing for the Future to cut energy and water consumption 20% by 2020.

LEADING



**ABC7 TOWN HALL: BUILDING A BETTER BAY AREA**

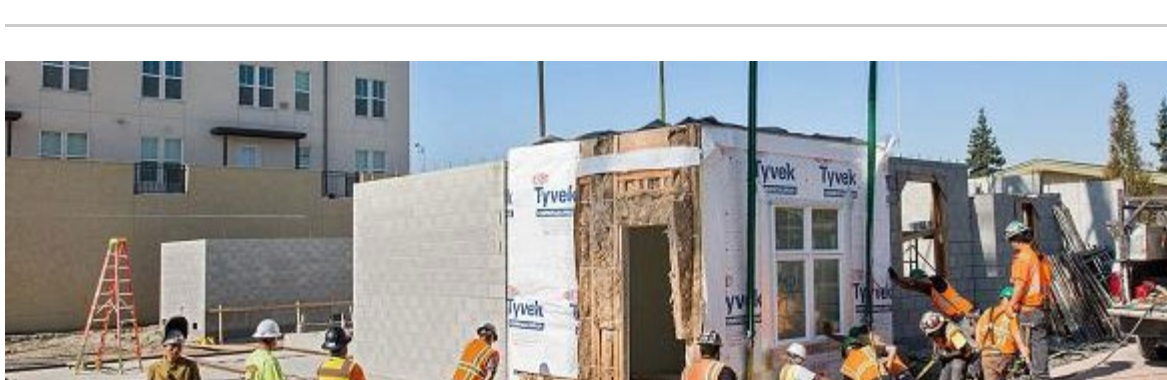
Cynthia Parker, BRIDGE President & CEO, was a panelist last month on an ABC7 Town Hall that convened experts to tackle tough questions around the housing crisis-from subsidies and permitting to construction costs and NIMBYs. The program, which was livestreamed, has received more than 14,000 views to date.

[Watch online](#)  
[BRIDGE in the news](#)



**ASSET MANAGER OF THE YEAR**

Congratulations Katherine Parker (center), our Vice President of Portfolio, who was honored with the 2019 Mickey Diggs Award for Asset Manager of the Year by CHAM (Consortium for Housing and Asset Management)! Katherine oversees BRIDGE's portfolio of high quality assets and leads our short- and long-term portfolio strategies, with particular concern for the properties' financial, operational and physical health.



**PARKER AT SILICON VALLEY FORUM: NOV. 14**

How do access to labor and labor costs influence housing production? SV@Home's lunchtime forum on Thursday, Nov. 14, will address this topic. Steve Levy of the Center for Continuing Study of the California Economy will frame the panel, which features BRIDGE President & CEO Cynthia Parker and other leaders in the field.

[Info and tickets](#)